

Easy to use and share, the affordable CS 1200 puts high-quality intraoral imaging within your reach.

CS 1200

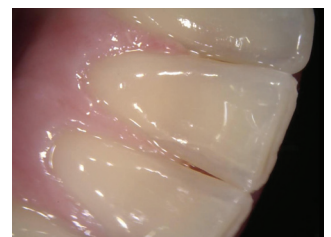


Superior image quality at an affordable price

Delivering high image resolution (1024 x 768), the CS 1200 reveals even the smallest details. As an affordable entry point into digital imaging, the CS 1200 puts high-quality intraoral images within the reach of any practice.

Enhanced patient communication

Thanks to the camera's crisp, high-quality images, the CS 1200 facilitates communication with your patients and is a perfect tool for patient education. And, more informed patients are more likely to make smarter decisions about their treatment—improving revenue opportunities and maximizing return on investment.



Capture high quality intraoral images.



Easy to share

Capture your patients' images and review them directly from the CS 1200. With the ability to store up to 300 images within the camera, the CS 1200 eliminates the need for memory cards or computers in each operatory. Supporting both PC and analog display, the camera's direct connections ensure fast and easy sharing between operatories.

Designed for comfort

Lightweight and compact, the CS 1200 fits easily in hands of all sizes and minimizes operator fatigue. Meanwhile, the camera's rounded head and tapered shape ensure patient comfort.

Simple to use

The CS 1200 features a 6-LED illumination system that automatically adjusts to ensure perfectly lit images in any lighting condition. The camera's wide focus range captures a variety of intraoral views.

Easy to integrate

Fully TWAIN compliant, the CS 1200 works with KODAK Imaging Software, as well as other leading imaging software. Plus, it comes complete with a mountable holder, and a variety of cables that support any connection: USB, AV, and S-video.

Expert service and support

Easy to install and use, the CS 1200 is fully backed by expert service and support, a one-year product guarantee, and optional extended warranty programs.

Technical Specifications

| Still Image Resolution | 1024 (H) x 768 (V) |
|------------------------|------------------------------|
| Video Resolution | 640 (H) x 480 (V) |
| Focus Range | 3 mm – 25 mm |
| Angle of View | 90° |
| Field of View | 80° |
| Focus | Fixed Focus |
| Light Source | 6 White LED array |
| Video Output | TV-NTSC, TV-PAL, S-Video |
| PC Connection | USB 2.0 high-speed interface |



Includes S-Video, AV, and USB connections

Would you like to know more? Visit www.carestreamdental.com or contact your local authorized dealer. Want to subscribe to our newsletter? E-mail dentalnews@carestream.com.

Thank you for your interest.

*For more details please contact us
on 0845 834 0866.*

With Compliments



HULBERT Dental ICT
Information Communication Technologies
division of Alterior Ltd

PO Box 487
Worcester
WR5 2WQ

Registered in England No: 4701892
+44 (0)845 834 0866